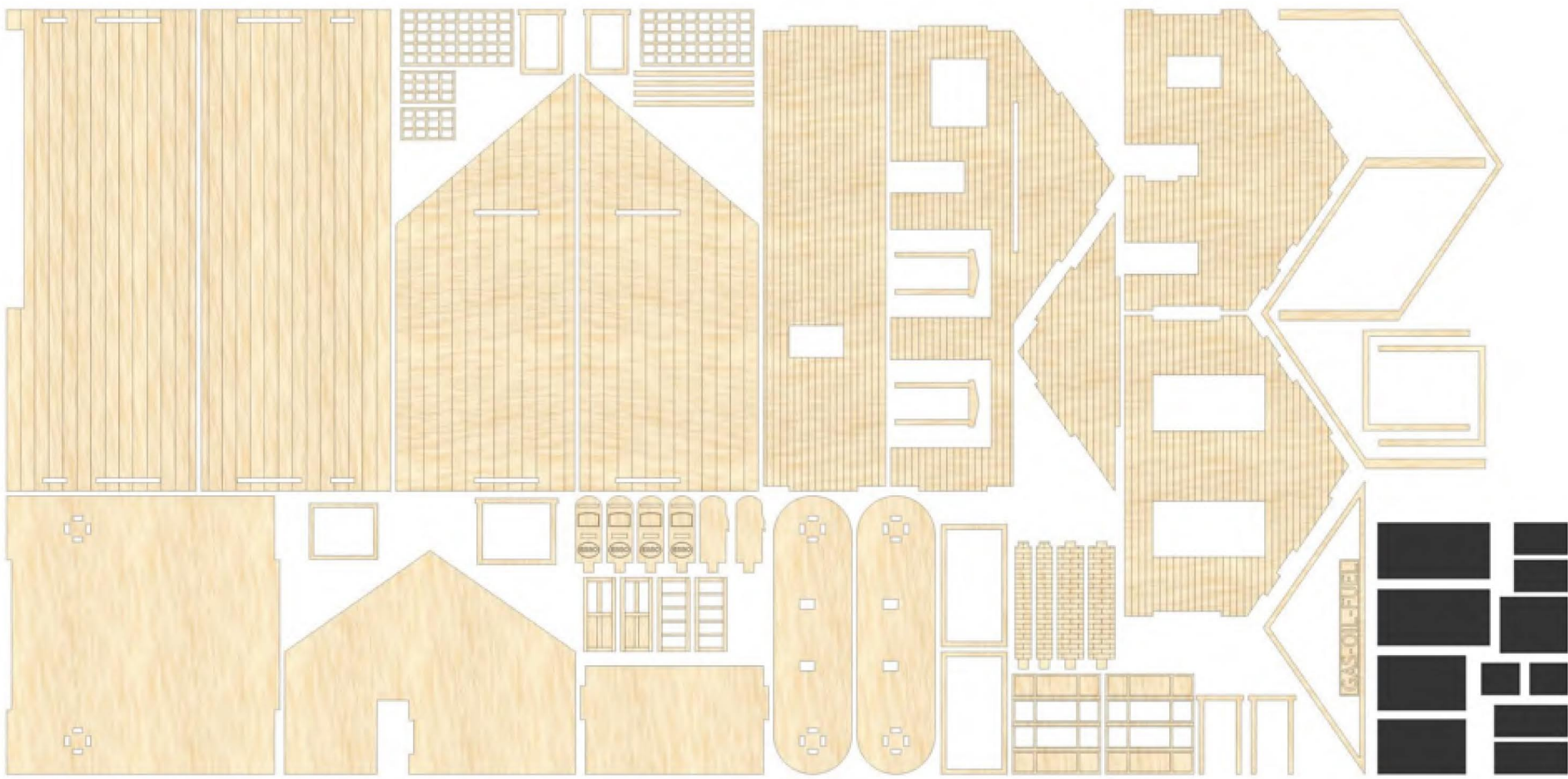


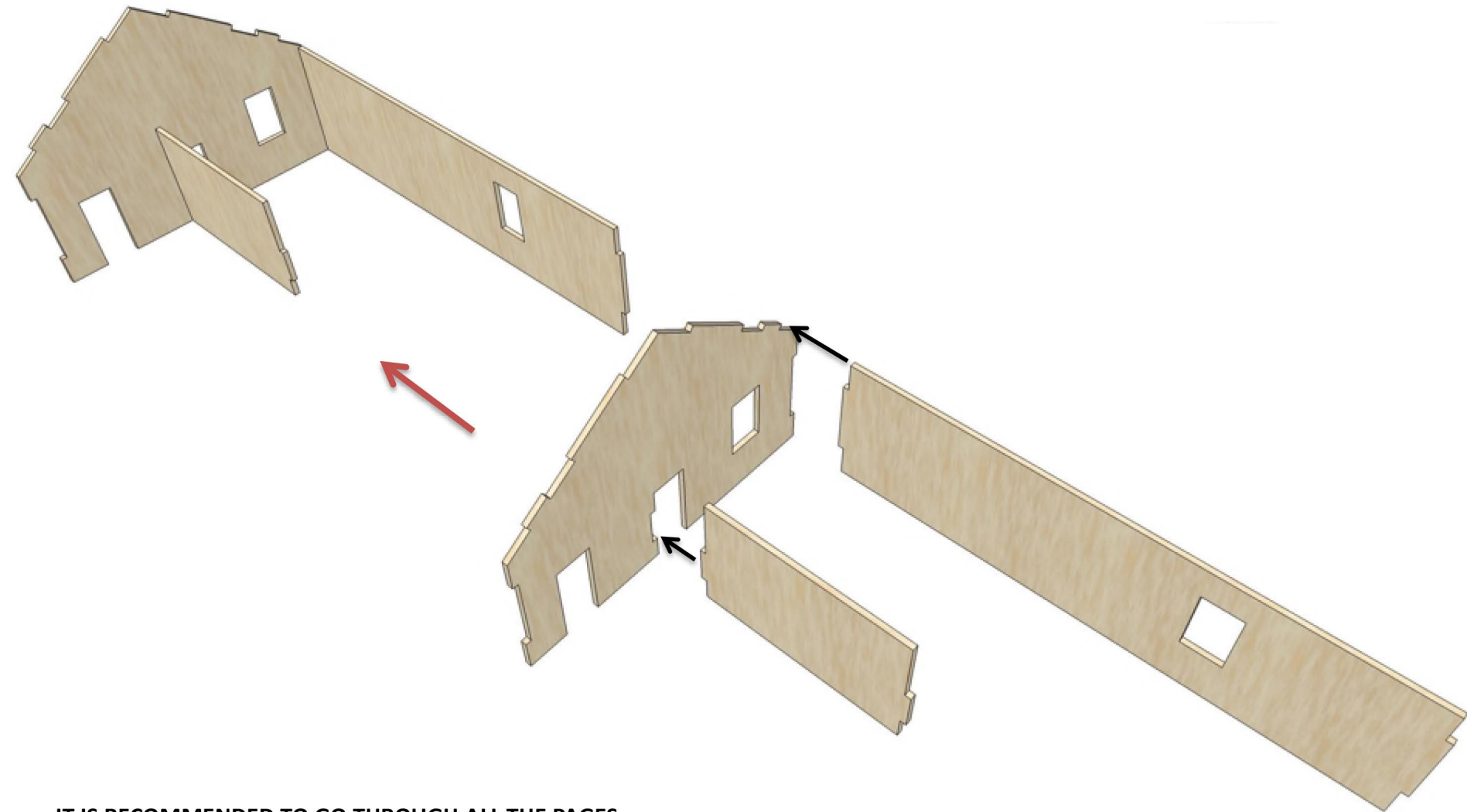
Visit us at www.mainstreetmodels.com for special pricing!



FIFTIES FUEL & GAS STATION

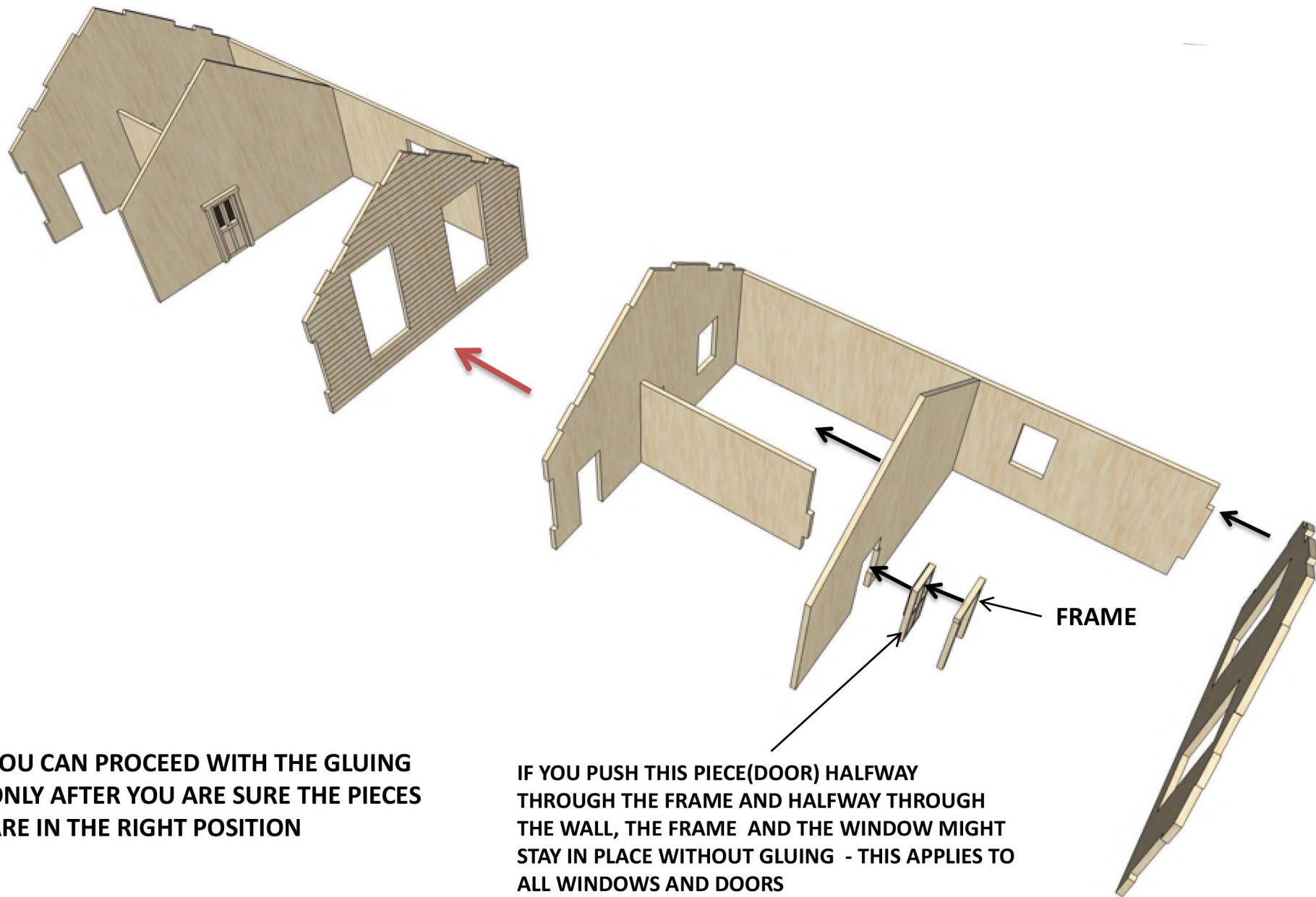


PARTS LIST



IT IS RECOMMENDED TO GO THROUGH ALL THE PAGES
AND SEE EACH STEP BEFORE STARTING THE ASSEMBLY

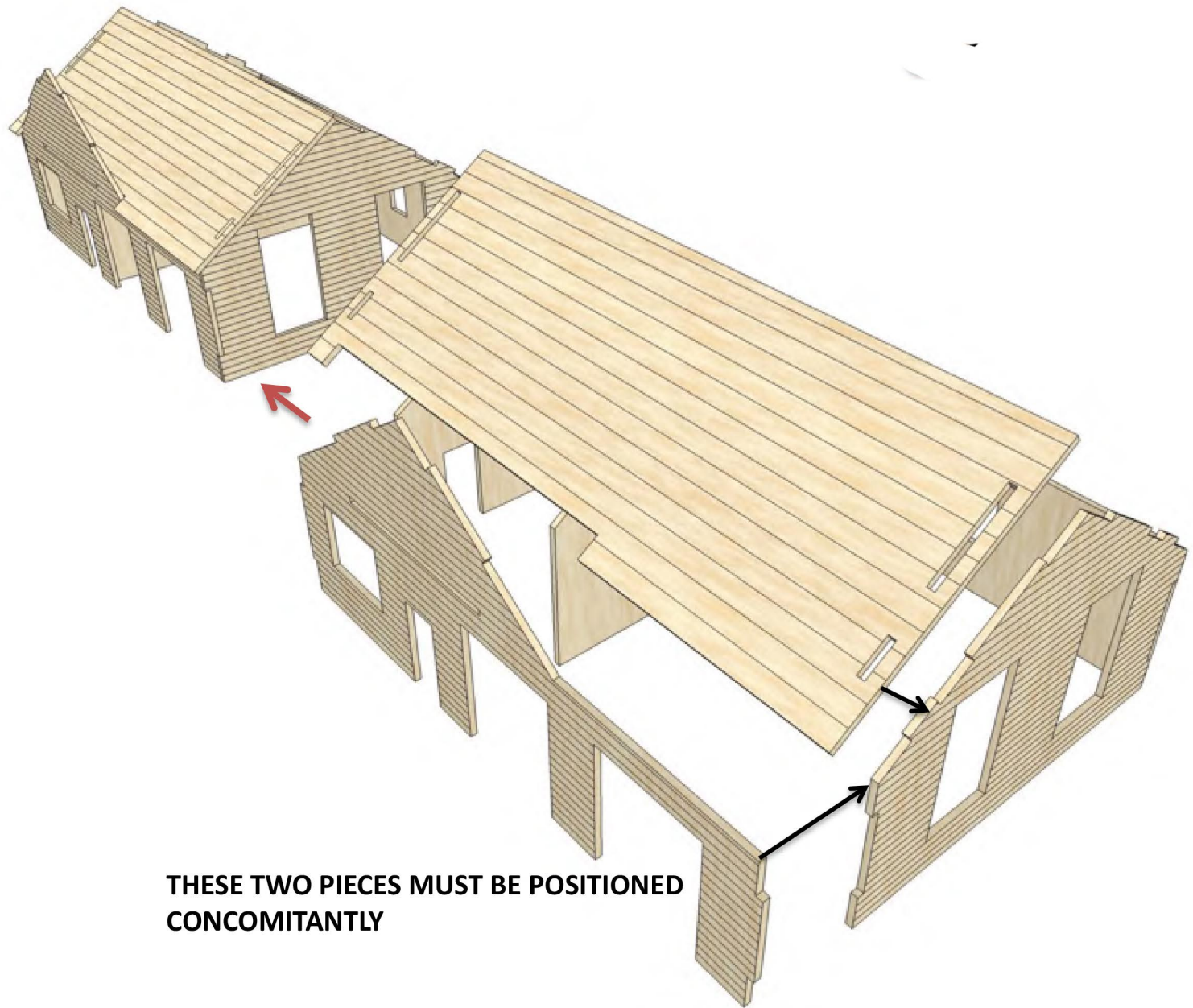
ASSEMBLY STEPS



YOU CAN PROCEED WITH THE GLUING ONLY AFTER YOU ARE SURE THE PIECES ARE IN THE RIGHT POSITION

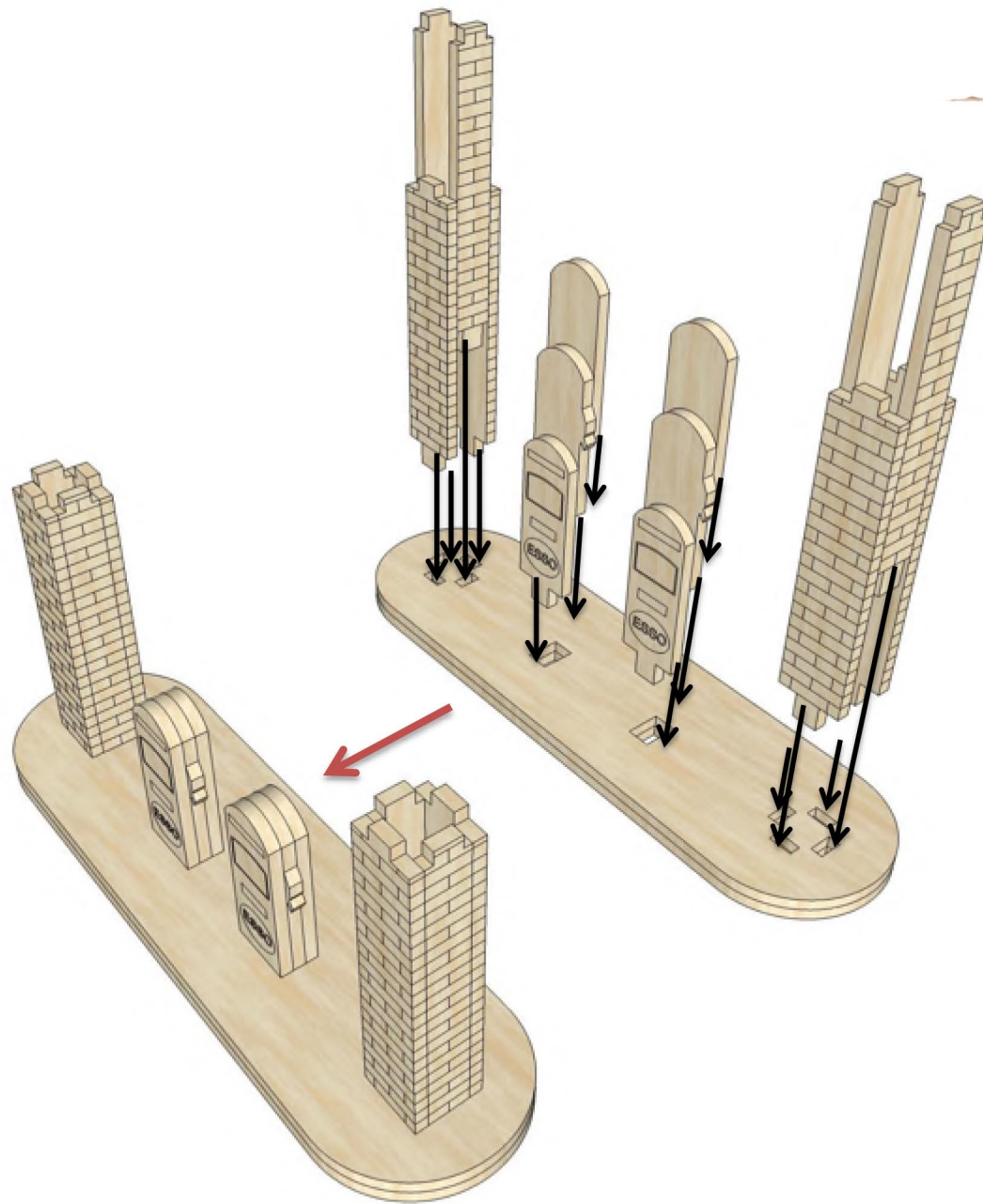
IF YOU PUSH THIS PIECE(DOOR) HALFWAY THROUGH THE FRAME AND HALFWAY THROUGH THE WALL, THE FRAME AND THE WINDOW MIGHT STAY IN PLACE WITHOUT GLUING - THIS APPLIES TO ALL WINDOWS AND DOORS

ASSEMBLY STEPS

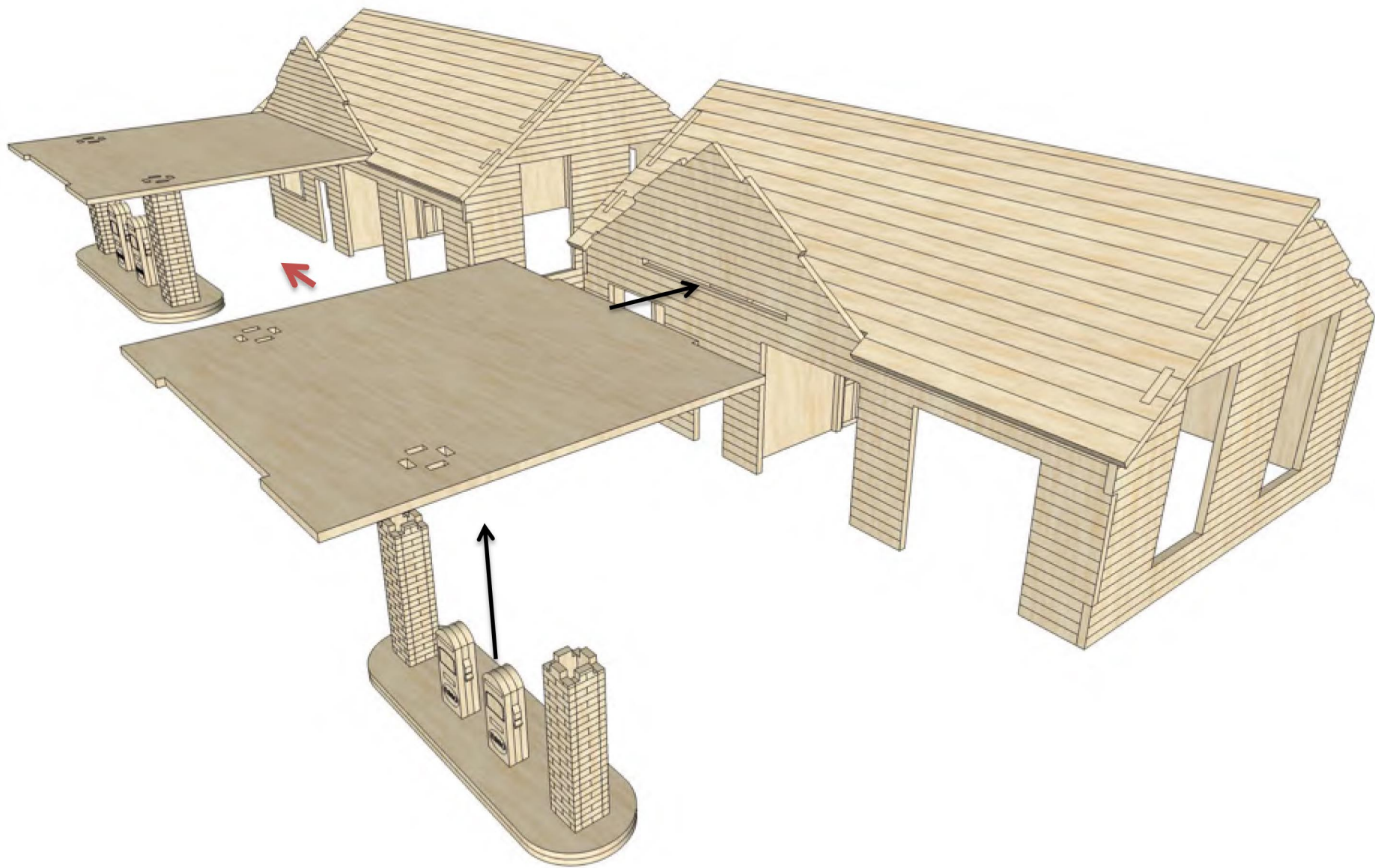


THESE TWO PIECES MUST BE POSITIONED
CONCOMITANTLY

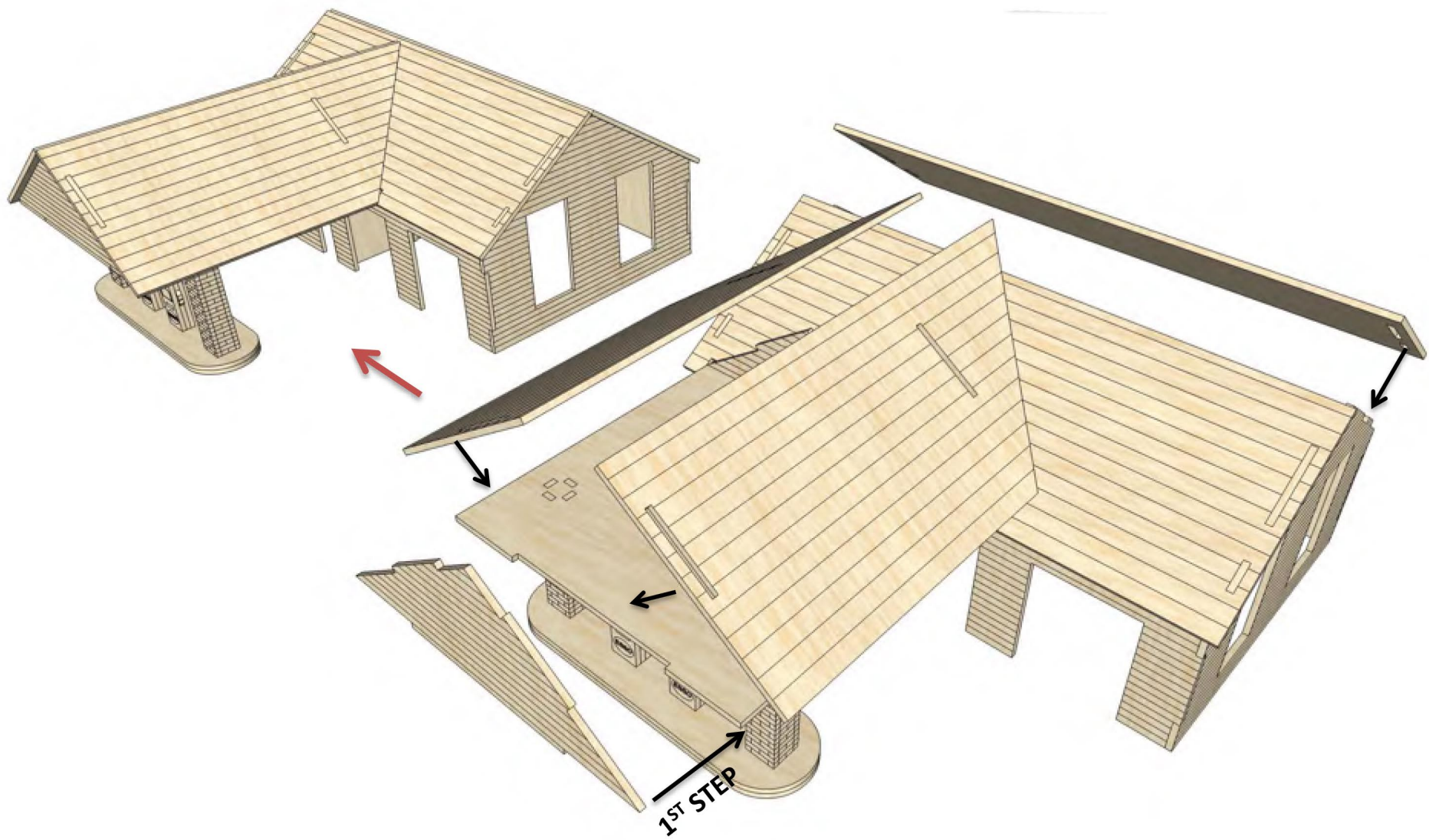
ASSEMBLY STEPS



ASSEMBLY STEPS

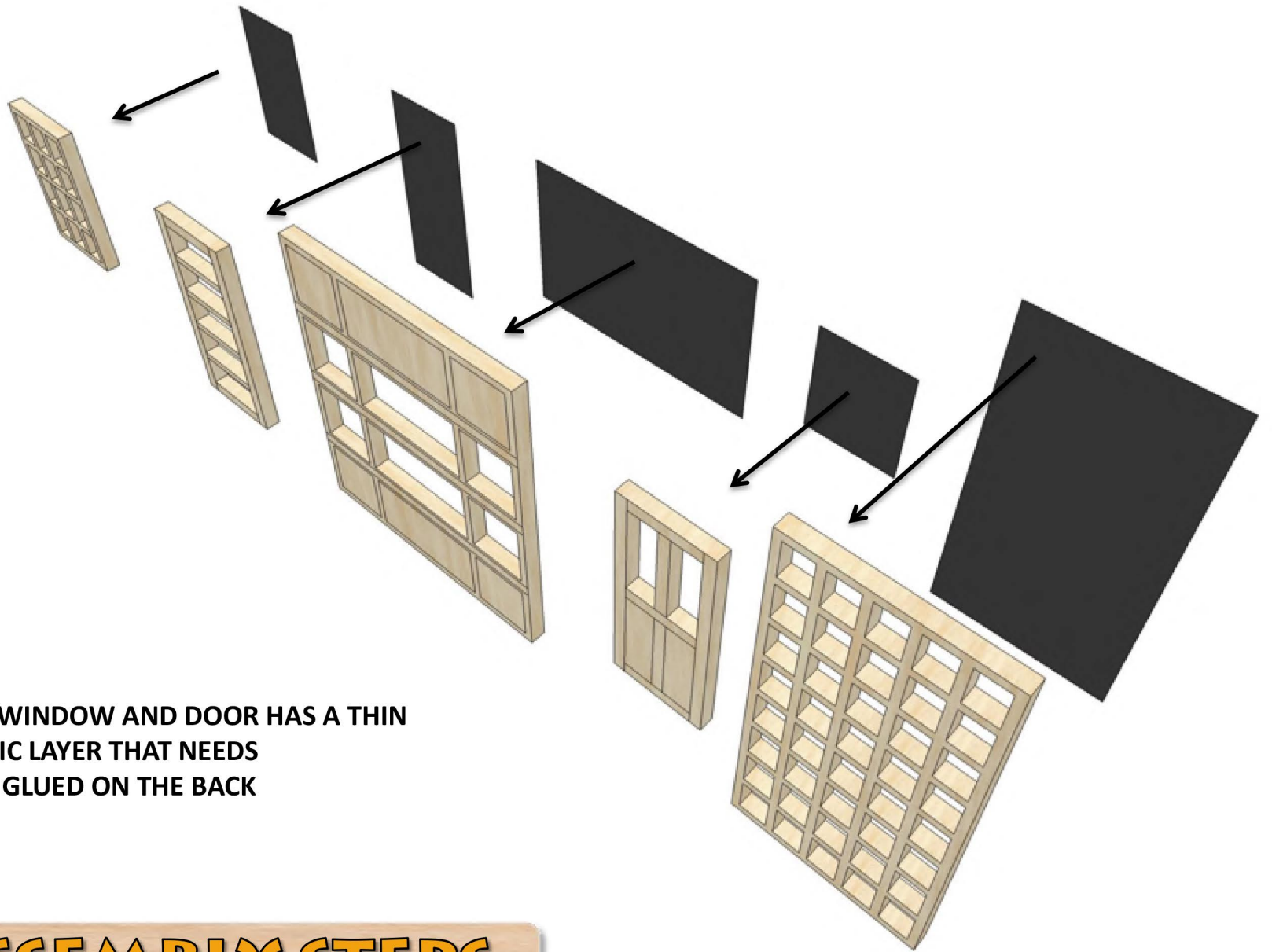


ASSEMBLY STEPS



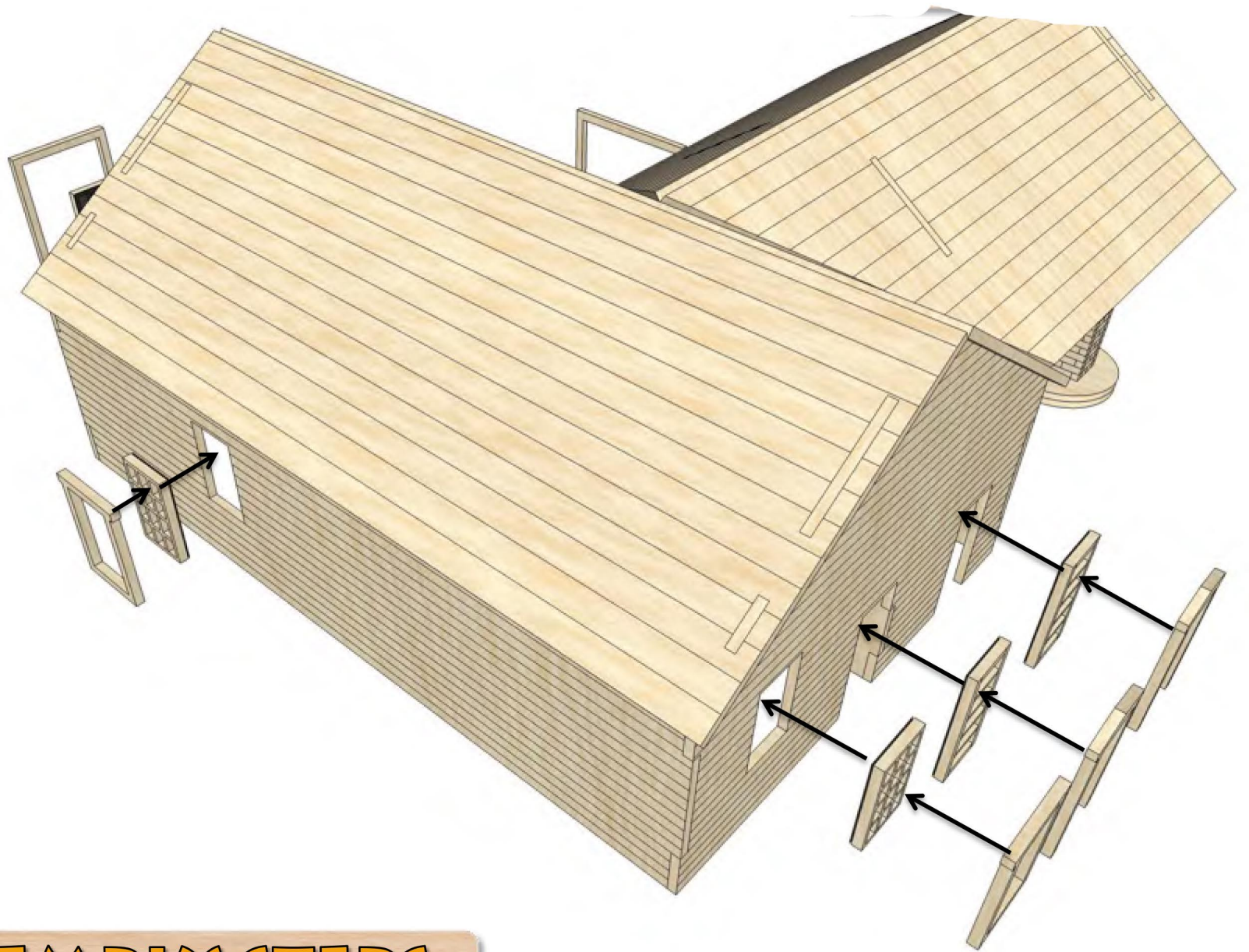
1ST STEP

ASSEMBLY STEPS

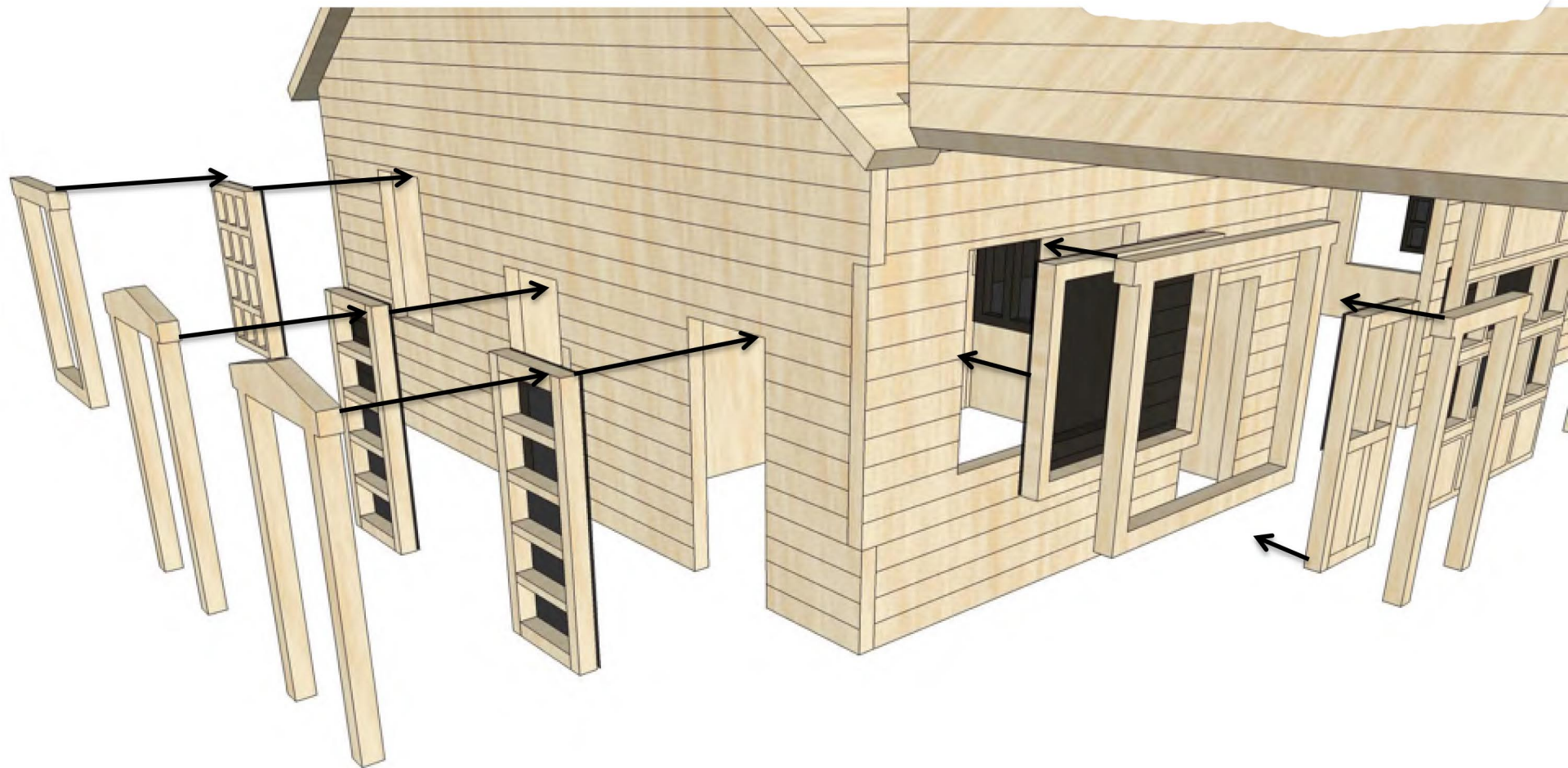


EACH WINDOW AND DOOR HAS A THIN PLASTIC LAYER THAT NEEDS TO BE GLUED ON THE BACK

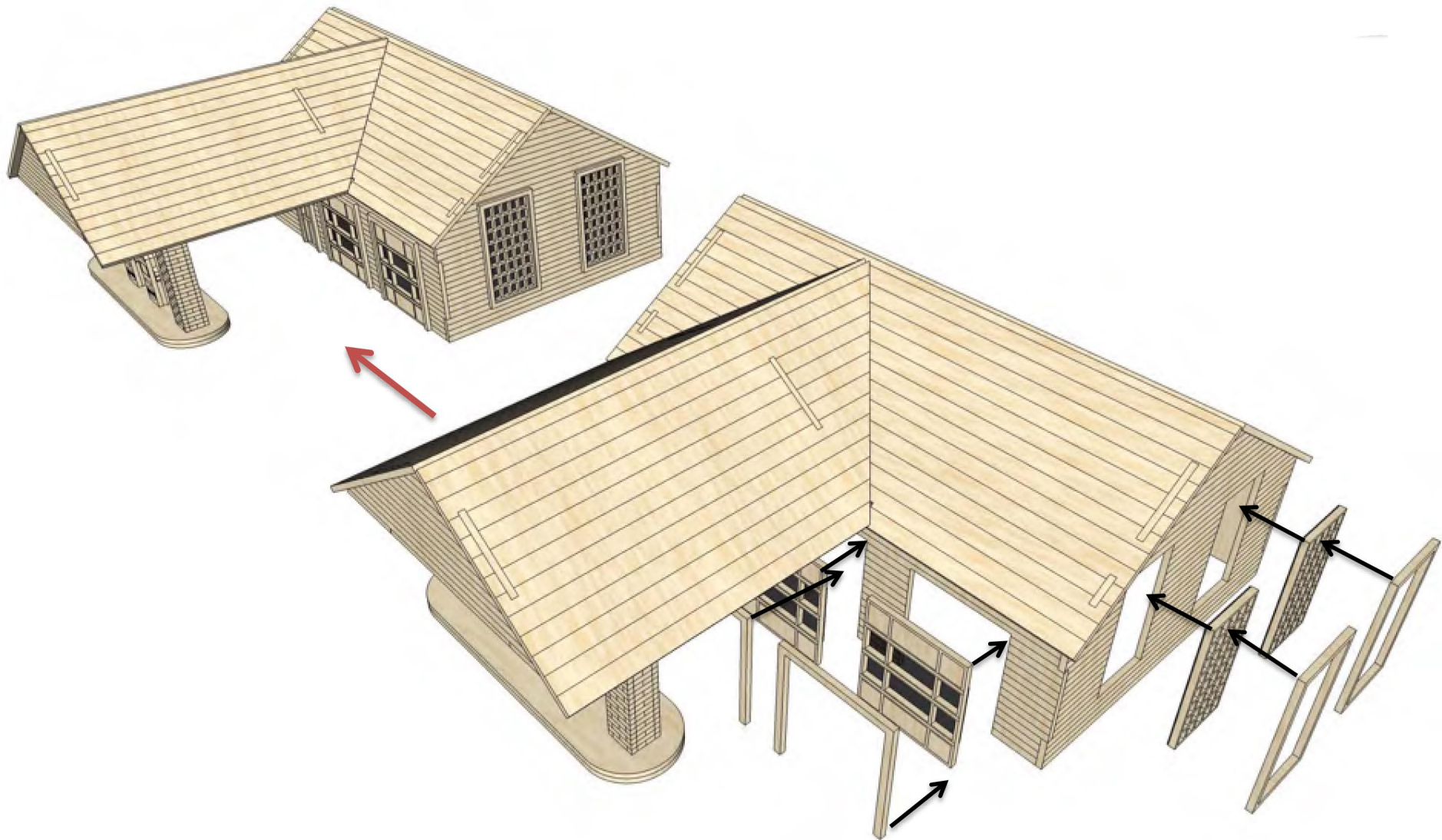
ASSEMBLY STEPS



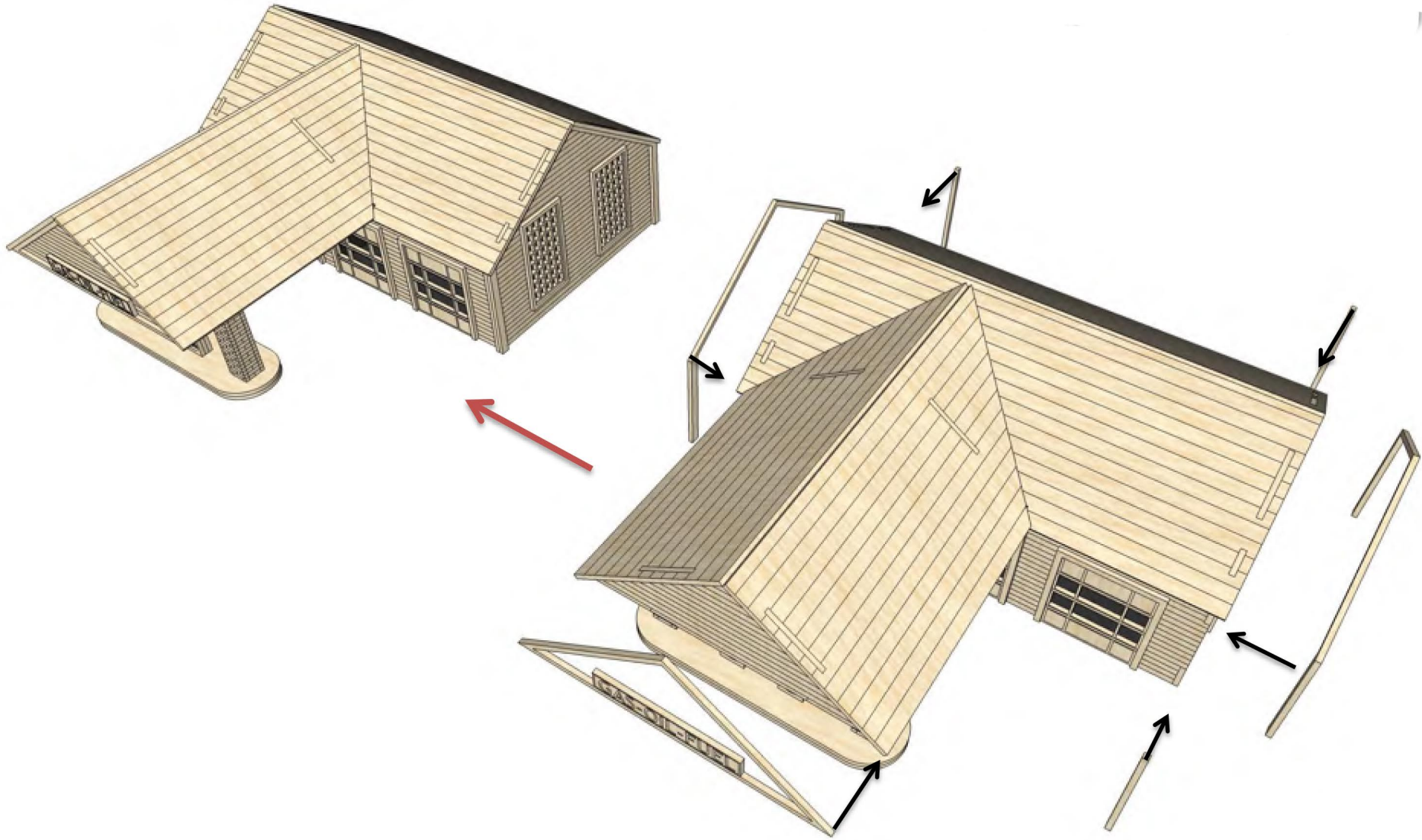
ASSEMBLY STEPS



ASSEMBLY STEPS



ASSEMBLY STEPS



ASSEMBLY STEPS

Visit www.mainstreetmodels.com for special pricing!



COMPLETED